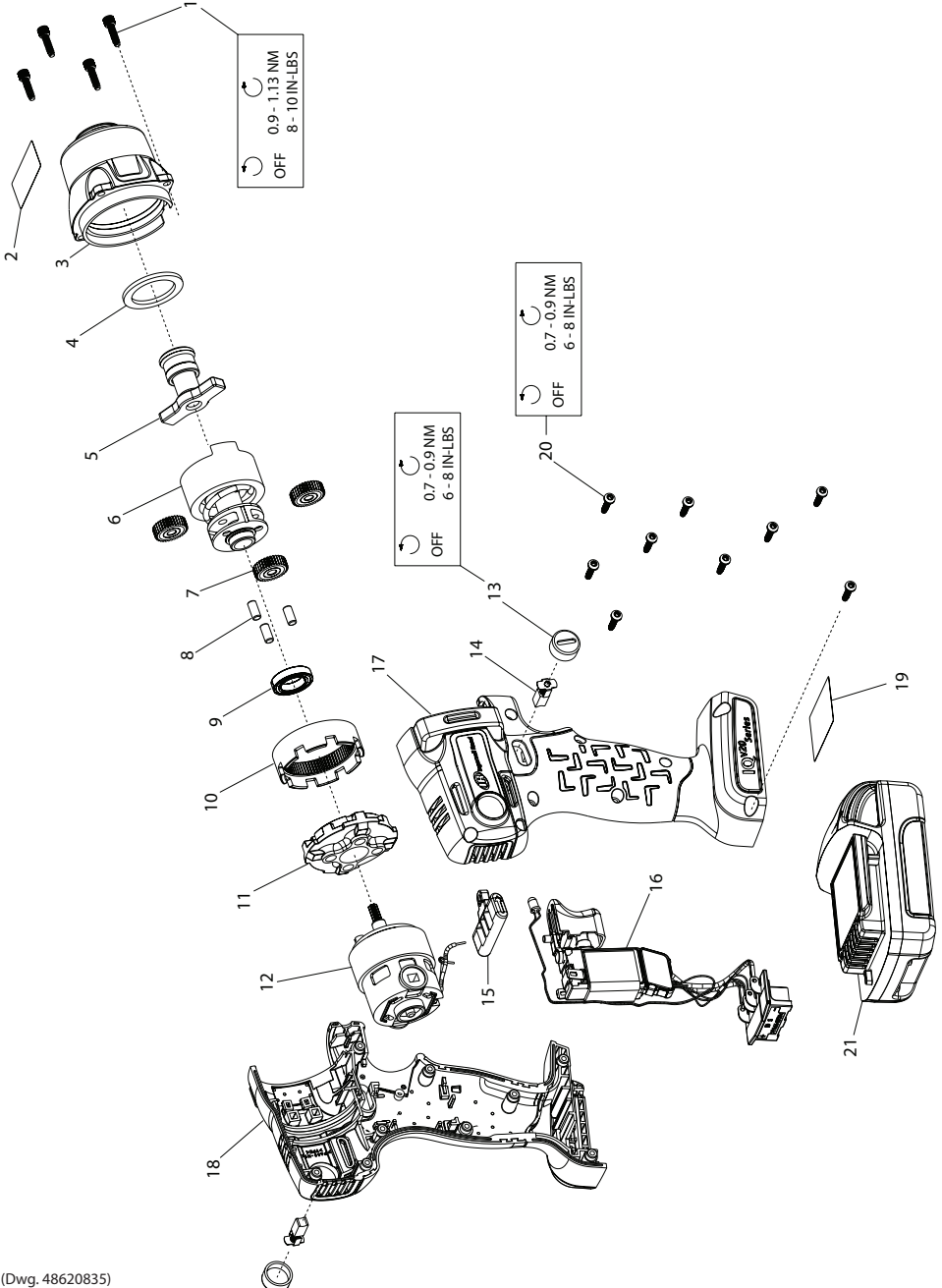


W5001 Series Cordless Impact Wrench - Exploded View



(Dwg. 48620835)

W5001 Series Cordless Impact Wrench - Parts List

Item	Part Description	Part Number	Item	Part Description	Part Number
*	Hammer Case Kit		12	Electric Motor Kit	W5111-K54
	For W5111 and W5131P	W5111-K727	13	Cap	---
	For W5151P	W5151P-K727	14	Brush Kit	W5111-54BK
1	Screw, Hammer Case (4 Required)	---	15	Forward/Reverse Actuator	W7150-K75
2	Warning Label	---	16	Trigger & Battery Connector Kit	W5130-K93
3	Hammer Case Assembly	---	*	Housing Kit	W5111-K40
4	Nylon Washer	---	17	Right Housing	---
5	Anvil Kit		18	Left Housing	---
	For W5111	W5111-K626	19	Information Label	---
	For W5131P	W5131P-K626	20	Screw, Housing (9 Required)	---
	For W5151P	W5151P-K626	*†	Fastener Kit	W5130-K105
6	Impact Mechanism Kit	W5111-K724	*‡	Label Kit	W5111-K99
*	Planetary Gear Kit	W5111-K37	*21	20V Li-Ion Battery Pack	
7	Planet Gear (3 Required)	---		1.5 Ah "Thin Pack"	BL2005
8	Pin (3 Required)	---		3.0 Ah "Full Capacity Pack" (Not Illustrated)	BL2010
9	Bearing, Gear Carrier	---	*22	Carrying Case	W5000-CASE
10	Ring Gear	---	*23	Protective Boot	W5111-BOOT
11	Ring Gear Holder	---			

* Not illustrated

† Includes Items 1 and 20

‡ Includes Items 2 and 19

Parts and Maintenance

When the life of the tool has expired, it is recommended that the tool be disassembled, degreased and parts be separated by material so that they can be recycled.

Tool repair and maintenance should only be carried out by an authorized Service Center.

Refer all communications to the nearest **Ingersoll Rand** Office or Distributor.

Related Documentation

For additional information refer to:

Cordless Impact Wrench Product Safety Information Manual 04581146.

Cordless Impact Wrench Product Information Manual 48383970.

Manuals can be downloaded from www.ingersollrandproducts.com